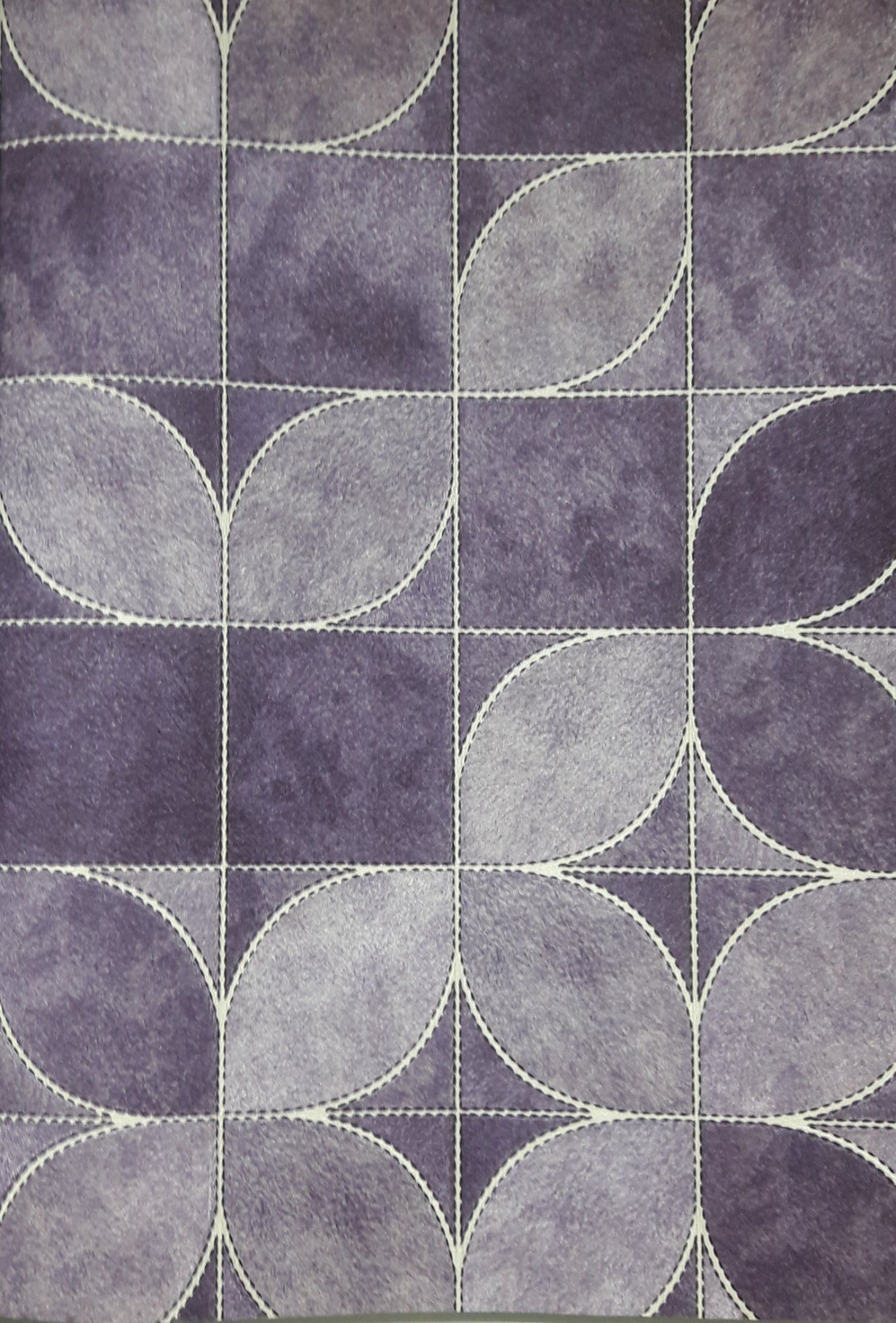


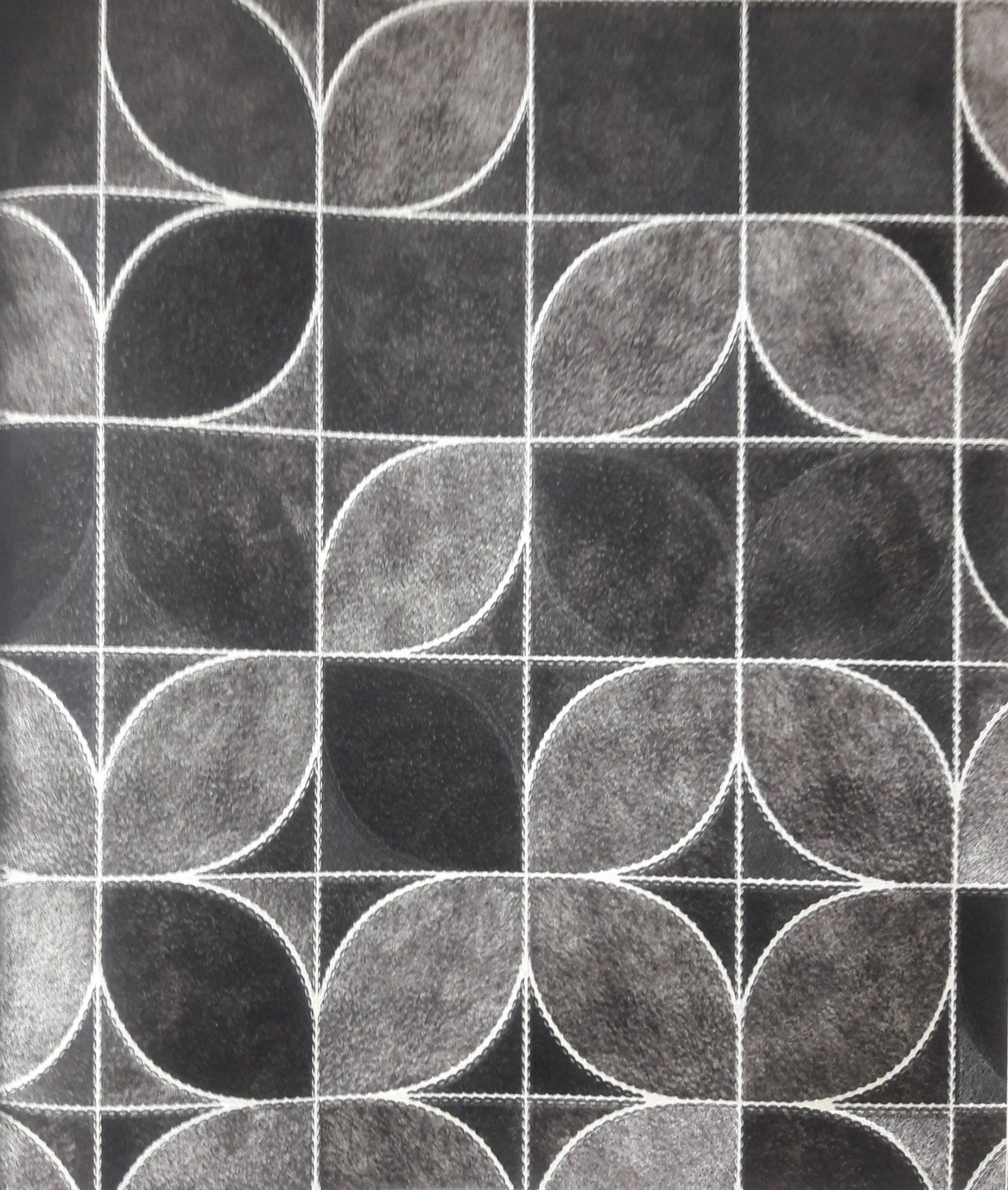


## NOBLE LUXURY

The stylist USES the stripe of winding stretch to combine pattern and the arrangement of light order, seem to say golden luxurious palace dream, let a person appreciate the elegant style of classical times; The fine stripe, orderly arrangement of rhombic texture and so on, fresh and natural forest green, can create a unique flavor that permeates each other.









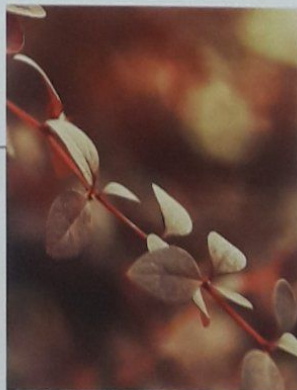






## NOBLE LUXURY

The stylist USES the stripes of winding stretch to combine pattern and the arrangement of tight order, seem like golden luxurious palace dream, let a person appreciate the elegant style of classical times; The fine and orderly arrangement of rhombic texture and so on, fresh and natural forest green, can create a unique flavor that permeates each other.















## BLE LUXURY

USES the stripe of winding stretch to combine pattern and the arrangement of light order, seem in luxurious palace dream, let a person appreciate the elegant style of classical times; The fine arrangement of rhombic texture and so on, fresh and natural forest green, can create a breath permeates each other.















## NOBLE LUXURY

The stylist USES the stripe of winding stretch to combine pattern and the arrangement of light color, seem to say golden luxurious palace dream, let a person appreciate the elegant style of classical times. The fine stripe, orderly arrangement of mottos texture and so on, fresh and natural forest green, can create a unique flavor that permeates each other.







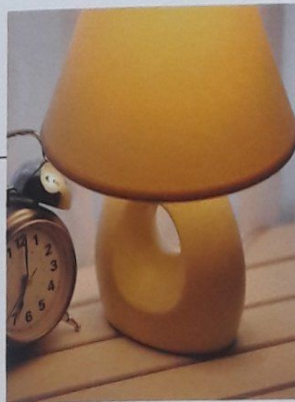






## OBLE LUXURY

ylist USES the stripe of winding stretch to combine pattern and the arrangement of tight order, seem  
 golden luxurious palace dream, let a person appreciate the elegant style of classical times; The fine  
 orderly arrangement of rhombic texture and so on, fresh and natural forest green, can create a  
 flavor that permeates each other.

















## NOBLE LUXURY

The stylist USES the stripe of winding stretch to combine pattern and the arrangement of light order, seem to say golden luxurious palace dream, let a person appreciate the elegant style of classical times. The fine stripe, orderly arrangement of rhombic texture and so on, fresh and natural forest green, can create a unique flavor that permeates each other.













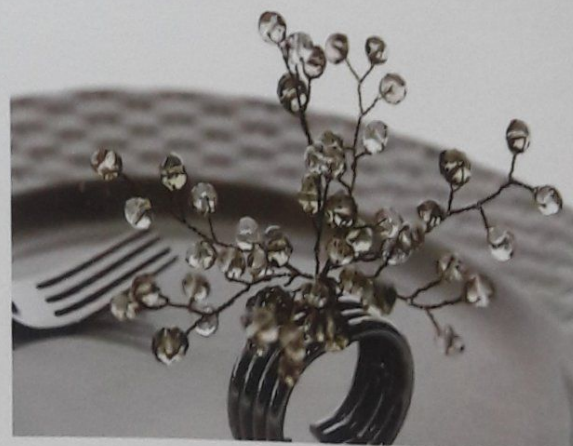






## DOUBLE LUXURY

IT USES the stripe of winding stretch to combine pattern and the arrangement of tight order, seem golden luxurious palace dream, let a person appreciate the elegant style of classical times; The fine orderly arrangement of rhombic texture and so on, fresh and natural forest green, can create a color that permeates each other.











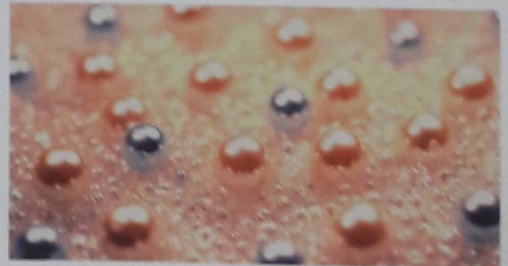






## NOBLE LUXURY

The stylist USES the stripes of winding stretch to combine pattern and the arrangement of light order, seem to say golden luxurious palace dream, let a person appreciate the elegant style of classical lines; The fine stripes, orderly arrangement of romantic texture and so on, fresh and natural forest green, can create a unique flavor that permeates each other.



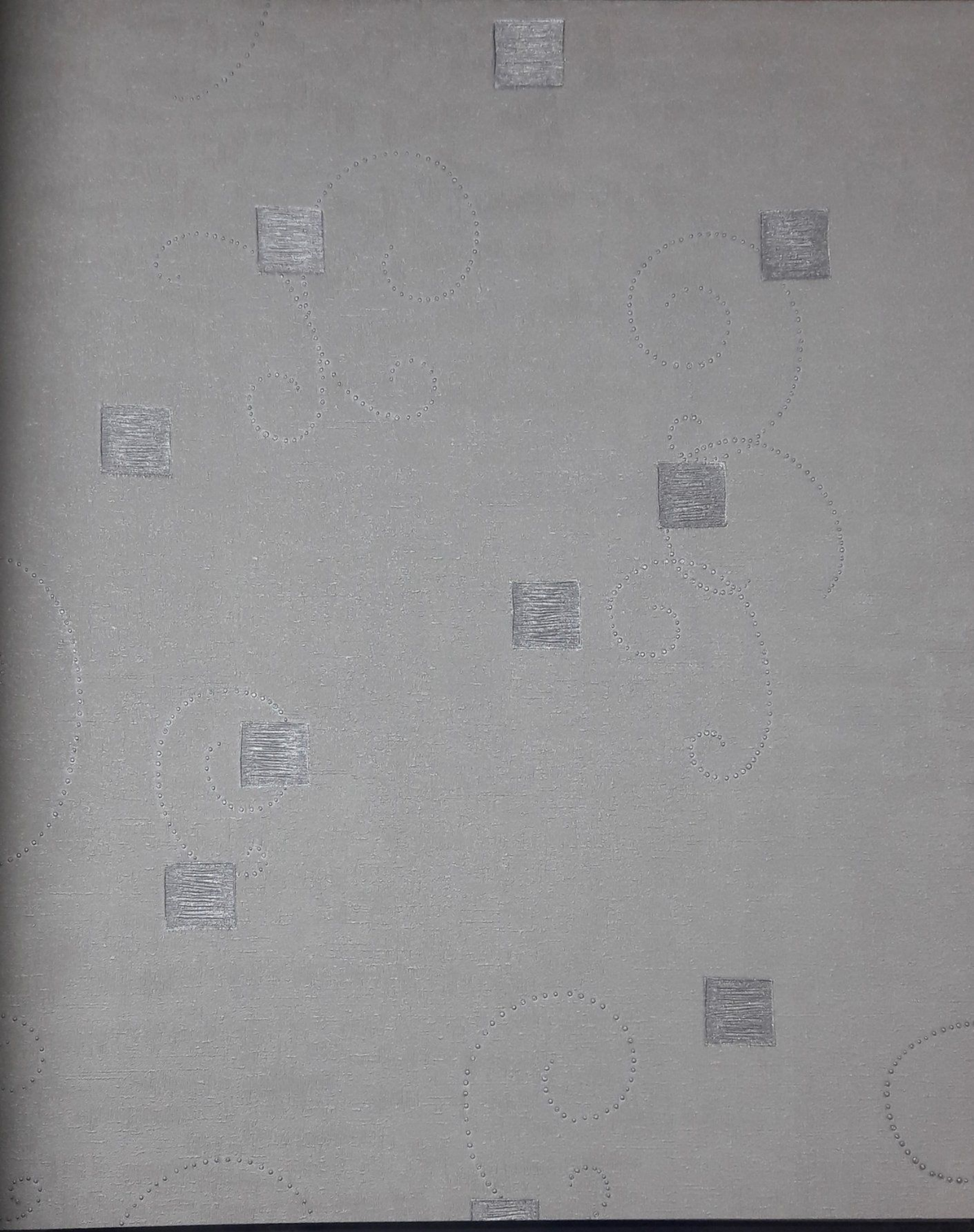














## NOBLE LUXURY

The artist USES the shape of winding stretch to combine pattern and the arrangement of light colors, seem to say golden luxurious palace dream, let a person appreciate the elegant style of classical times. The fine shape, orderly arrangement of realistic texture and so on, fresh and natural forest green, can create a unique flavor that permeates each other.









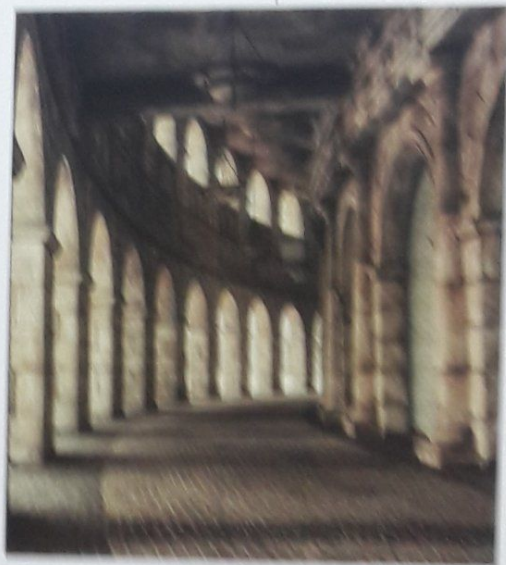




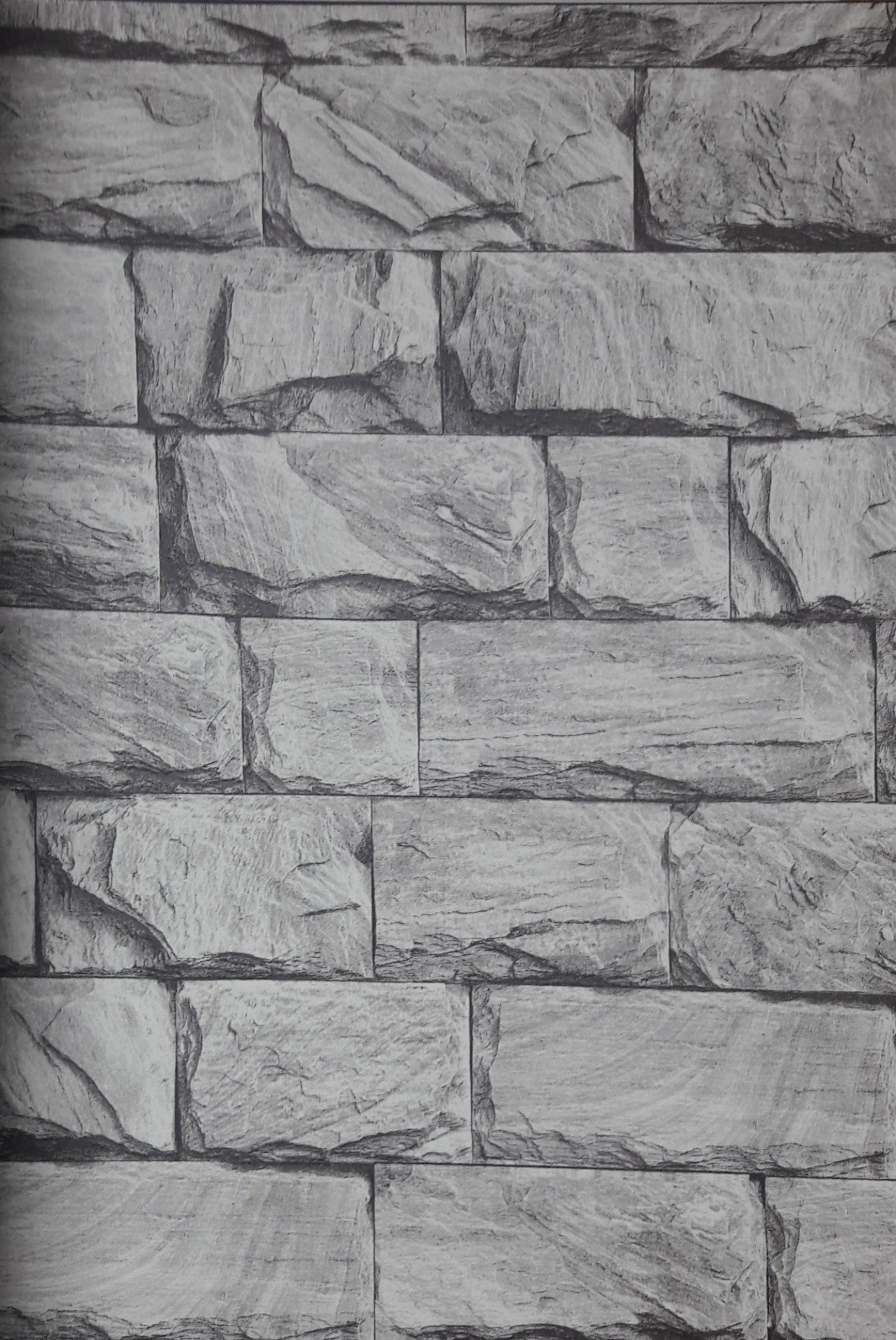


## NOBLE LUXURY

The style 1925 has a mix of mixing with a modern setting and the arrangement of light color, some to the golden natural stone design, as a person approaches the elegant style of classical times. The fine style orderly arrangement of modern texture and so on, high and natural forest green, can create a whole luxury that permeates each other.















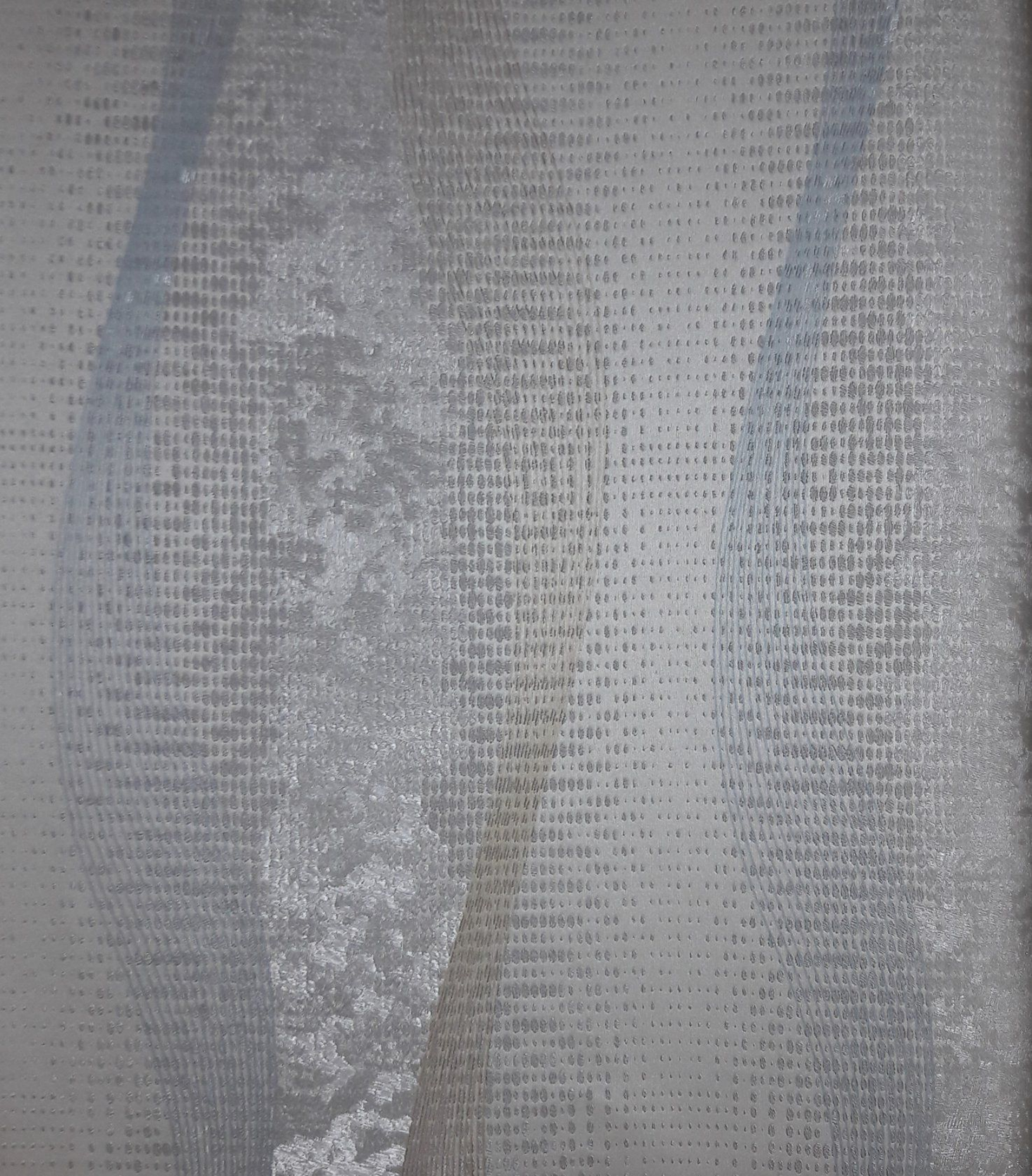
## BLE LUXURY

The shape of winding stretch to combine pattern and the arrangement of light order, seem  
luxurious peace dream, let a person appreciate the elegant style of classical times; The fine  
arrangement of romantic texture and so on, fresh and natural forest green, can create a  
at permeates each other.











# NOBLE LUXURY

The stylist USES the stripe of winding stretch to combine pattern and the arrangement of light order, seem to say golden luxurious past dreams. In a person appreciate the elegant style of classical times. The fine stripe, orderly arrangement of rhombic texture and so on, fresh and natural forest green, can create a unique flavor that permeates each other.

















## NOBLE LUXURY

The styles USES the stripe of winding stretch to combine pattern and the arrangement of light order, seem to say golden luxurious palace dream, let a person appreciate the elegant style of classical times. The fine stripe, orderly arrangement of rhombic texture and so on, fresh and natural forest green, can create a unique flavor that permeates each other.













